

Paper4PC™
TECHNOLOGY

DIGITAL PEN

GSM CONFIGURATION



Clairefontaine



Copyright © 2005 Metalinks. All rights reserved.

The reproduction, transfer, distribution or storage of part or all the content of this document, in any form, without prior written authorization from Metalinks, is prohibited.

PaperPC and MyNotes are registered trademarks of Metalinks. Nokia is a registered trademark of Nokia Corporation. Microsoft is a registered trademark of Microsoft Corporation. Bluetooth is a registered trademark of Bluetooth SIG, Inc. Other product and company names mentioned in this document may be trademarks or brand names for their respective holders.

The use of certain products or services described in this document may require the purchase of a subscription. The availability of certain products or services described in this document may vary depending on the configurations and equipment. The use of PaperPC services implies acceptance of the Terms Of Service (TOS), which can be consulted at the following address:

<http://www.clairefontaine-paperpc.com/mynpublic2/html/en/cus.html>

Metalinks applies a method of continuous development. As a result, Metalinks reserves the right to make changes and improvements to any product described in this document, without any notice.

Under no circumstances can Metalinks be held responsible for any loss of data or income, nor for any specific damage or incidents, either directly or indirectly.

The content of this document is provided "as is". To the extent permitted by applicable law, no warranties of any kind, express or implied, including but not limited to implied warranties of merchantability and fitness for a particular purpose, shall apply with regard to the accuracy, reliability or content of the document. Metalinks reserves the right to revise this document or to withdraw it at any time without notice.



To ensure the availability of the products, which may vary from region to region, go to the site:

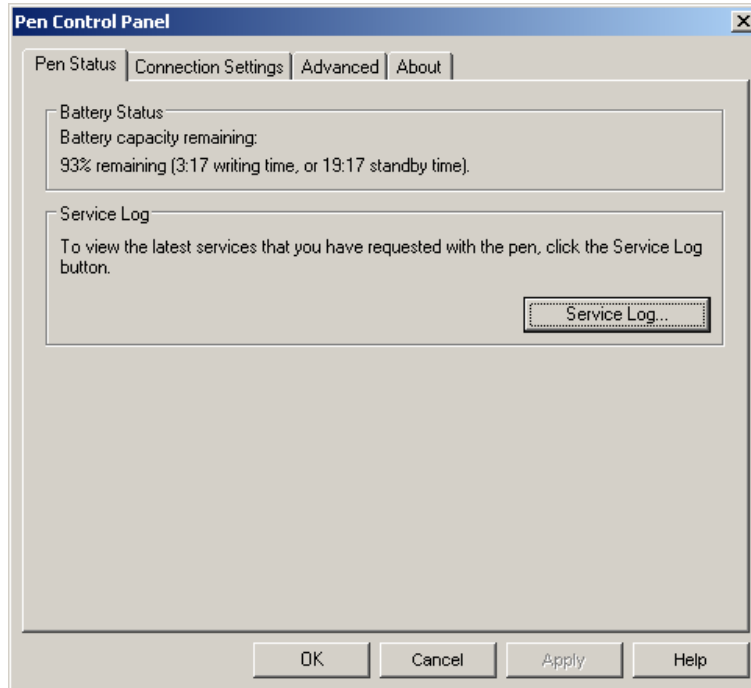
<http://www.clairefontaine-paperpc.com>

In some countries there may be restrictions on using Bluetooth devices. Check with your local authorities.



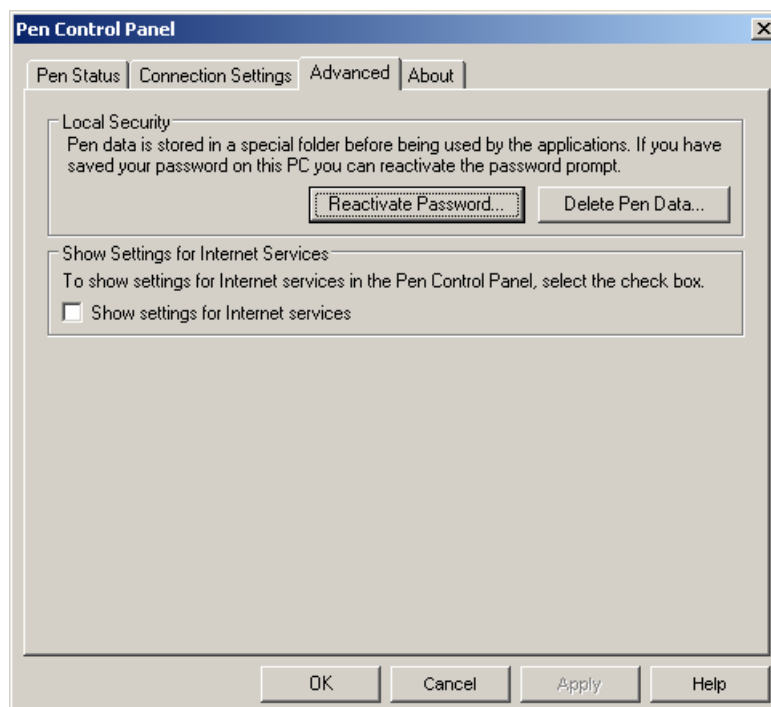
To configure a GSM connection on your digital pen:

- 1) Connect your digital pen to your computer via the USB port, the icon at the bottom right of your screen changes from  to ,
- 2) Double-click on the icon, a window appears:



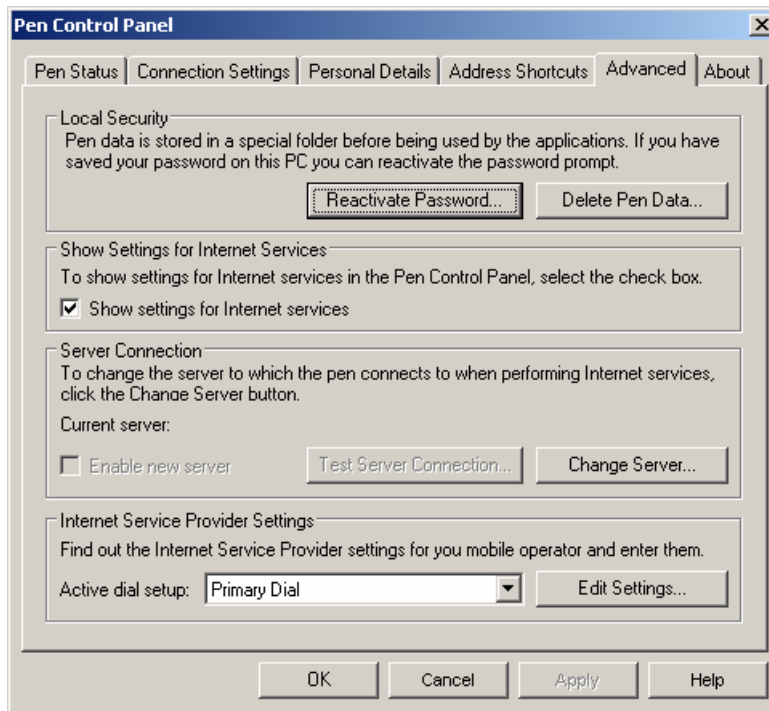
You can also access this window using the “Start” -> “Programs” -> “Digital Pen” -> “Pen Control Panel” menu.

- 3) Select the "Advanced" tab:

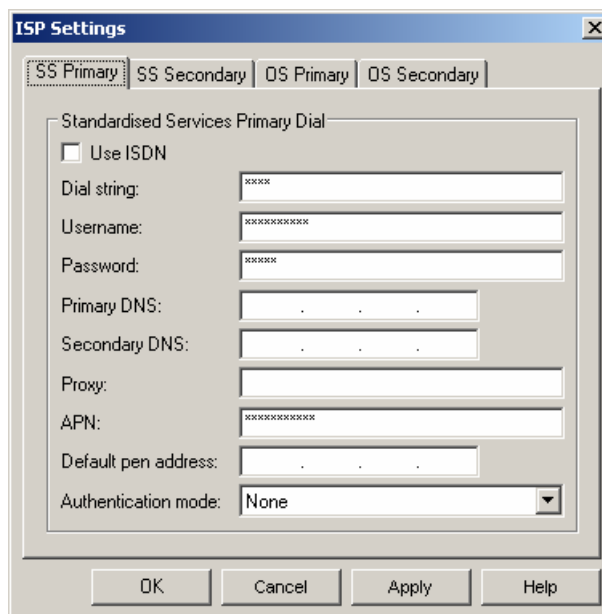




- 4) Check the “Show settings for Internet Services” box, then click on “Apply”, the lower part of the tab is displayed:

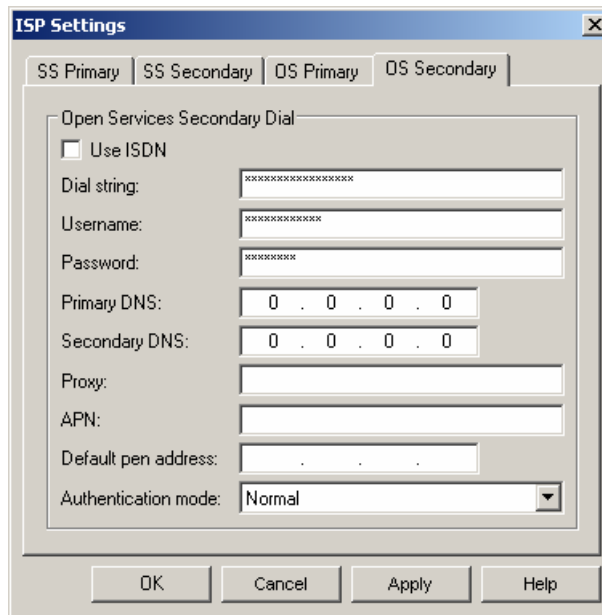


- 5) Check that the “Active dial setup” field is set to “**Secondary dial**”, then click on the “Edit settings...” button, a new window appears:





6) Select the "OS Secondary" tab:



7) Complete the fields according to the parameters of your Internet access account. These parameters were provided to you by your Internet Service Provider (ISP).

Use ISDN	Unchecked
Dial string	The number to dial provided by your ISP
Username	Your user name provided by your ISP
Password	Your password provided by your ISP
Primary DNS	The number of the Primary DNS of your ISP
Secondary DNS	The number of the Secondary DNS of your ISP
Proxy	/
APN	/
Default pen address	/
Authentication mode	Normal

8) Click on "Apply", then on "OK" and again on "OK" to close the first window.